

Lean Payroll

Seb Aspland, Group CTO



Manufacturing vs Services

3%

3.6x



1%

1.5x

Lean Payroll

Devops

2 developments per year



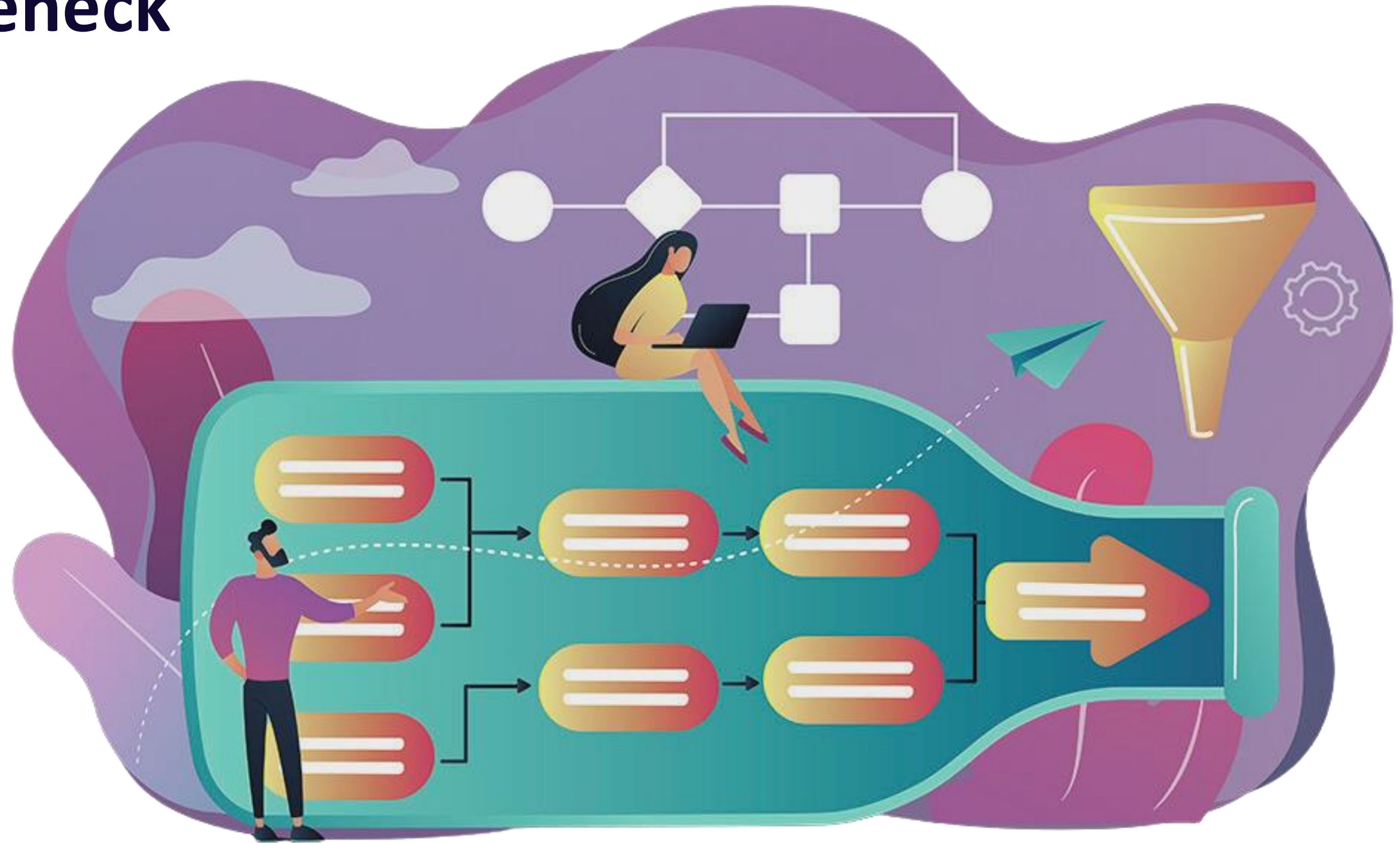
10 developments per day



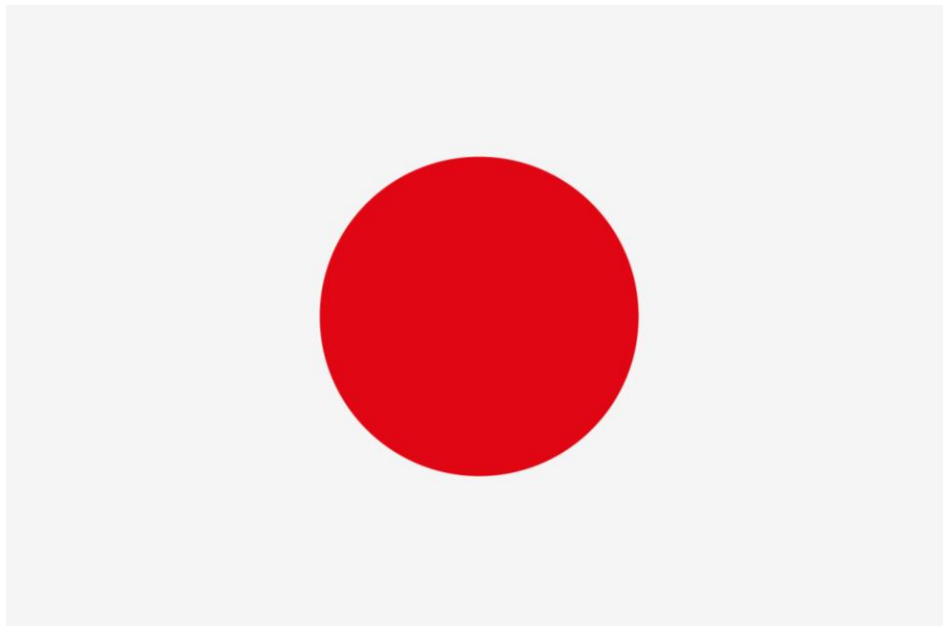
1000x increase in developments



The Payroll Bottleneck



So, what is lean?

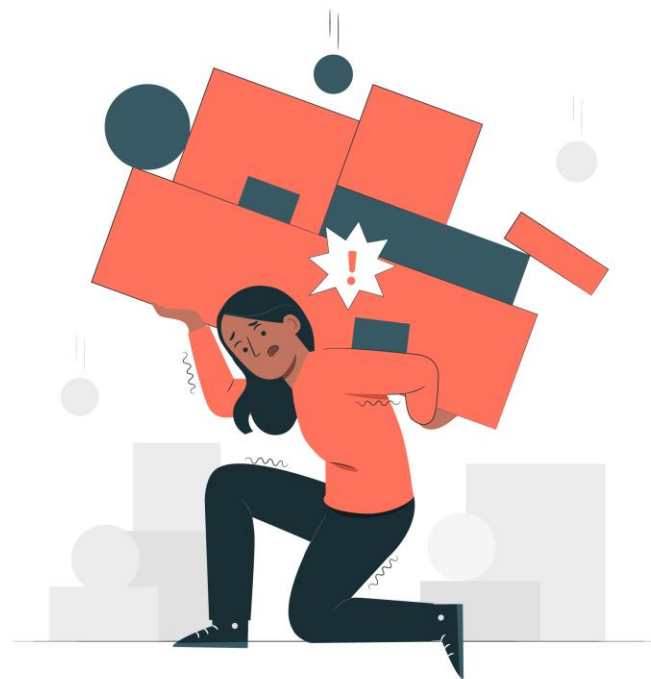


Key Lean Concepts

Uneven Work



Overburden



Waste



UNEVEN WORK



An illustration of a woman with dark hair, wearing a red long-sleeved shirt and dark pants, looking overwhelmed. She is holding up a large, tilted red rectangular paper. Several other papers, some red and some dark blue, are floating around her. A white starburst icon with a red exclamation mark is positioned above the word 'OVERBURDEN'. The background is a light gray with various geometric shapes like circles and squares in shades of gray and blue.

OVERBURDEN

WASTE









Key Questions

How can we make our work visible?

What could we change to make our work more even?

Where are we overburdened and why?

What are we doing that adds no value?



